

# LANscape® Fibre Housing

CORNING

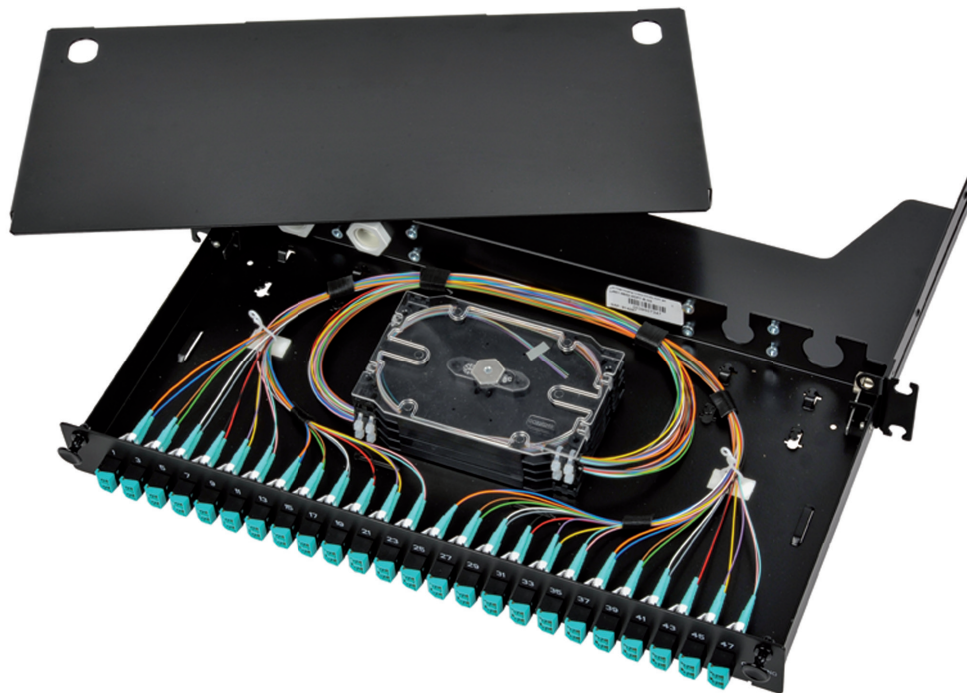


## Introduction

Our LANscape Fibre Housings are designed to fulfill all your connectivity needs in any enterprise cabling installation that is based in a 19" rack. Whether you have to cable a building backbone, a small to medium sized campus network or even a low density distribution frame, the LANscape Fibre Housings always offer the right answer.

The three basic options of the product family give you flexibility and offer a panel for every installation:

1. Equipped with adapters and splice packs for maximum protection and easy segregation of fibres the fully loaded housing option is ready for fusion splicing.
2. The housing variation with adapters and splice bridge offers an economic alternative for fusion splicing applications, saving time while routing and splicing the fibres inside the housing.
3. For a low fibre count installation with either pre-terminated assemblies or using UniCam® connectors for field termination, the housing comes with a front panel including adapters that match your choice of connectivity. Accessories for preterminated assemblies or Plug & Play™ or EDGE™ solutions trunks and FTTD/FTTO applications have to be ordered separately.



**1U LANscape Fibre Housing, 48 fibres LC Duplex with splice packs**  
| Photo LAN1-48AD-PGTL-B

# LANscape® Fibre Housing

CORNING

## Features and Benefits

### Easy to remove top cover

No tools needed

### Housing made of aluminium

Lightweight, but robust

### Quick-mount feature

Allows single-person mounting of housing

### Splice capacity of up to 96 fibres in 1U

Segmentation of fusion splices with splice packs of 12 fibres each or cassettes with 24 fibres each

### Accomodate different termination methods

Pigtail splicing, field connectorisation, preterminated cables, Plug & Play™ or EDGE™ trunks can be installed in the same housing

### Adapters with ceramic inserts and LC duplex with shutters

Minimal insertion loss and clean connectors

### Low installation depth

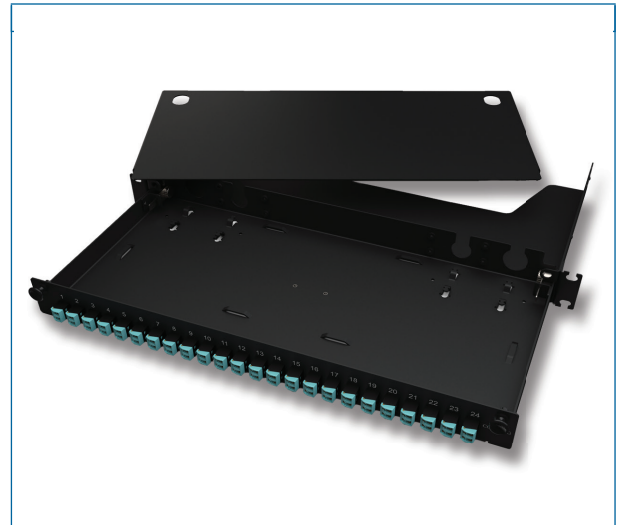
Mountable in shallow cabinets or racks

### Available in black and grey

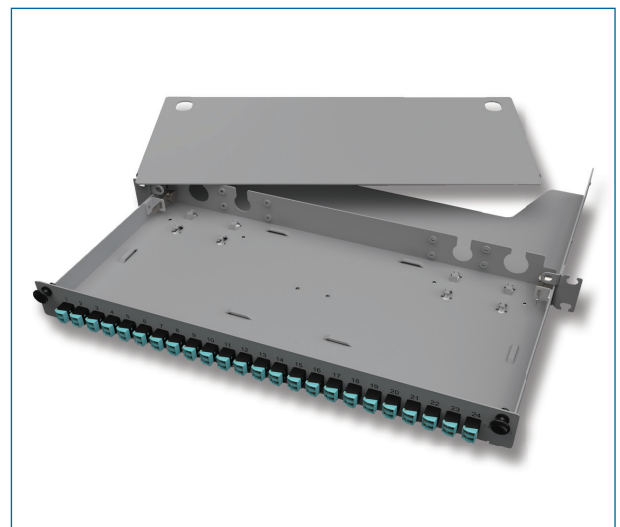
Colour can be chosen to best suit the application

### Multiple labelling options

Port numbering above and below adapter modules or customised labels



LANscape Fibre Housing with Adapters, black



LANscape Fibre Housing with Adapters, grey

## Ordering Information

	Height unit	Housing colour	Dimensions (HxWxD)
LANscape Fibre Housing	1U	Black	44 mm x 483 mm x 233 mm
LANscape Fibre Housing	1U	Grey	44 mm x 483 mm x 233 mm

## Ordering Information

LAN 1 -     -     -

1
2
3
4

### 1 Select fibre count.

- 04 = 4 fibres\*
- 06 = 6 fibres\*
- 08 = 8 fibres\*
- 12 = 12 fibres\*
- 24 = 24 fibres\*
- 36 = 36 fibres\*
- 48 = 48 fibres (up to 48 use ADPT or PGTL configuration)
- 72 = 72 fibres (LC only with HDHS, HDCR, ADPT or BRDG configuration)
- 96 = 96 fibres (LC only with HDHS, HDCR, ADPT or BRDG configuration)

### 3 Select configuration option.

- ADPT = front panel loaded with adapters only (Breakout version)
- PGTL = universal splice pack with 12 pre-installed coloured pigtails (up to 48 fibres), protectors not included
- HDHS = MFT splice tray for up to 24 heat-shrink splice protectors with 12 pre-installed coloured pigtails (protectors not included)
- HDCR = MFT splice cassette for up to 24 crimp splice protectors with 12 pre-installed coloured pigtails (protectors not included)
- BRDG = stackable splice bridge for up to 96 splices and easy loose tube or pigtail management with 12 pre-installed coloured pigtails

### 2 Select connectivity.

- AD = Shuttered LC Duplex MM/OM3+OM4, aqua
- AV = Shuttered LC Duplex MM/OM4, violet
- AE = Shuttered LC Duplex UPC SM/OS2, blue
- AF = Shuttered LC Duplex APC SM/OS2, green
- E7 = SC Duplex MM/OM3+OM4, aqua
- 72 = SC Duplex UPC SM/OS2, blue
- D9 = SC Duplex APC SM/OS2, green
- 5C = SC Simplex UPC SM/OS2, blue
- 6C = SC Simplex APC SM/OS2, green
- E5 = ST® compatible MM/OM3+OM4, aqua ring
- 19 = ST compatible UPC SM/OS2, blue ring
- 11 = FC SM/OS2, metal
- P5 = E2000 APC SM/OS2, green
- P6 = E2000 UPC SM/OS2, blue

### 4 Select housing colour.

- B = Black
- G = Grey

*\*Suitable for all adapter types with universal splice packs (heat-shrink/crimp) including 12 pigtails & cover*



# LANscape® Fibre Housing - Hybrid

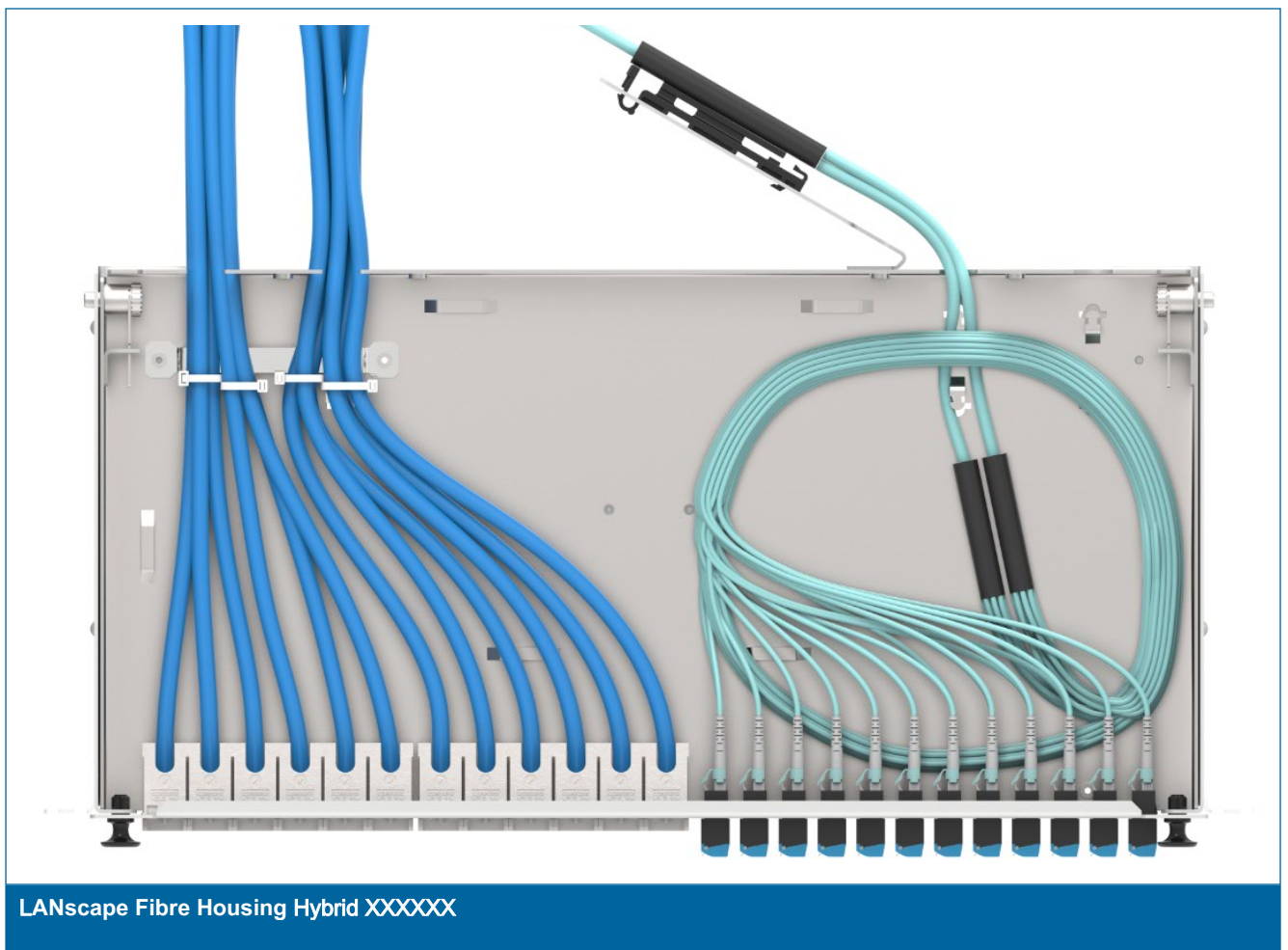
CORNING

## Overview

LANscape Fiber Housing (LAN1) offer termination solutions for various applications in the LAN environment. Developed for 19" racks the housings allow configurations for different connectivity needs as preterminated assemblies, field termination, or pigtail splicing. LANscape Fiber Housing hybrid version (LAN1) can mix fibre and copper connectivity within the same housing to support special installations, for instance in co-location racks or multimedia applications.

Necessary accessories for field termination within the housing are included in the shipment. Accessories for preterminated assemblies or Plug & Play™ or EDGE™ solutions trunks and FTTD/FTTO applications have to be ordered separately.

Copper modules to be ordered separately: CAXASM-00104-C001



# LANscape® Fibre Housing - Hybrid

CORNING

## Features and Benefits

### Easy to remove top cover

No tools needed

### Housing made of aluminium

Lightweight, but robust

### Quick-mount feature

Allows single-person mounting of housing

### Adapters with ceramic inserts and LC duplex with shutters

Minimal insertion loss and clean connectors

### Low installation depth

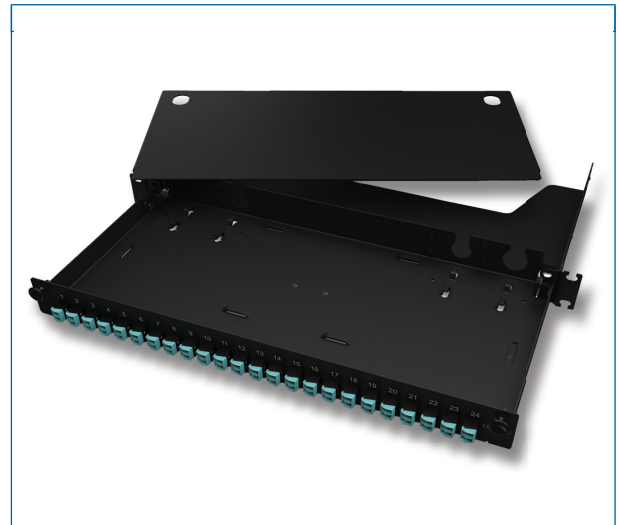
Mountable in shallow cabinets or racks

### 12 fibre ports and 12 Copper port

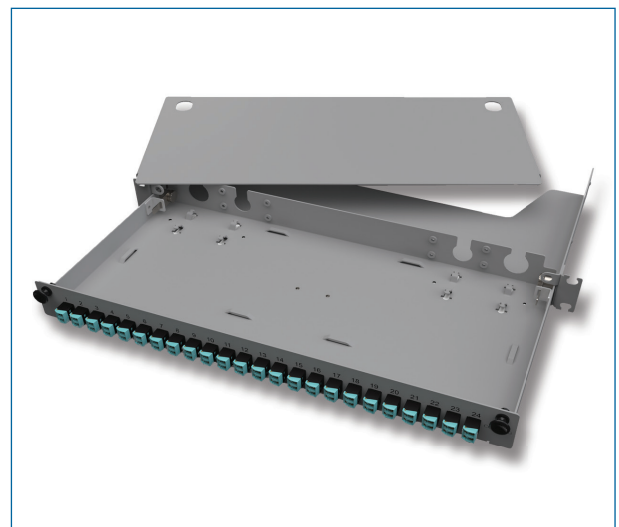
Accepts up to 12x S500 LANscape copper modules while are LC adapters provided

### Multiple labelling options

Port numbering above and below adapter modules or customised labels



LANscape Fibre Housing with Adapters, black



LANscape Fibre Housing with Adapters, grey

## Ordering Information

	Height unit	Housing colour	Dimensions (HxWxD)
LANscape Fibre Housing	1U	Black	44 mm x 483 mm x 233 mm
LANscape Fibre Housing	1U	Grey	44 mm x 483 mm x 233 mm

# LANscape® Fibre Housing - Hybrid

CORNING

## Ordering Information

L A N 1 -  - H Y B R I D -  -

**1** **2** **3** **4**

**1** Select fibre count.

06 = 6 fibres  
12 = 12 fibres  
24 = 24 fibres

**3** Select fibre position on the front panel.

L = Fibre on the left  
R = Fibre on the right

**2** Select fibre adapter type.

AE = Shuttered LC Duplex UPC SM, blue  
AF = Shuttered LC Duplex APC SM, green  
AD = Shuttered LC Duplex PC MM, aqua  
AV = Shuttered LC Duplex PC MM, violet

**4** Select housing colour.

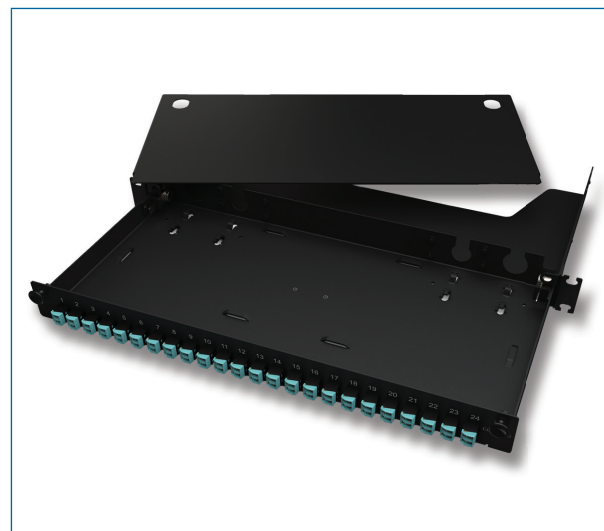
B = Black  
G = Gray

## Direct Termination with UniCam® Connectors or Preterminated Assemblies

Partially loaded panels (or Breakout versions) are available with LC, SC, ST® compatible or E2000 connector interface and come equipped with fibre adapters. They are ideal for direct termination with UniCam® connectors or fusion splicing with the help of the LANscape splice packs. For details on the UniCam solution, we have an extensive resource centre online, that provides helpful information on installation methods, technical resources, videos and links to the products in the online catalogue, accessible under: [www.corning.com/unicam](http://www.corning.com/unicam).

LANscape fibre housings offer the possibility to use different additional accessories for cable strain relief to be placed at the back of the housing to enable the use of:

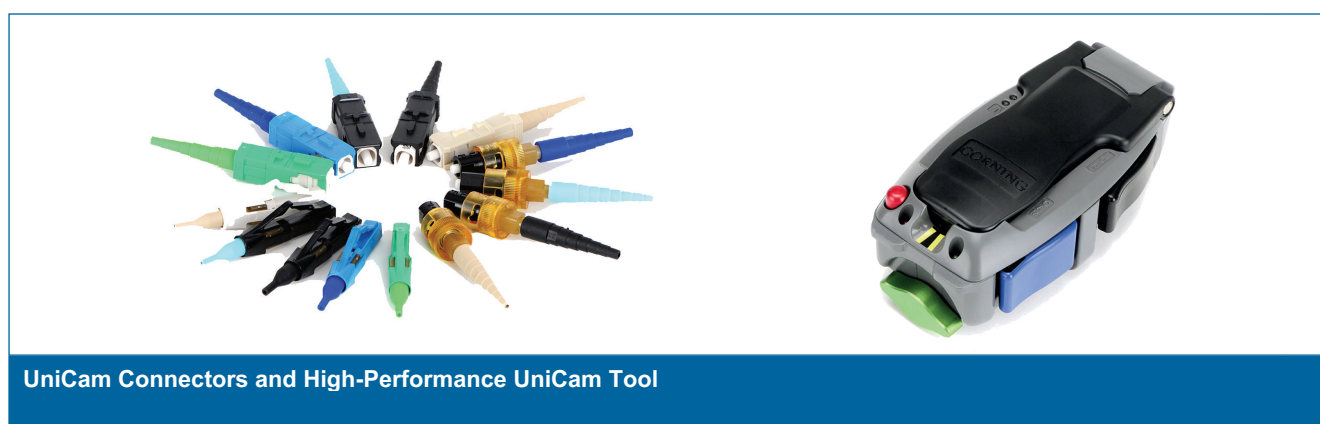
- Preterminated cable assemblies, such as connectorised MIC™ or Breakout Tight Buffer cables
- Plug & Play™ or EDGE™ Solutions trunks
- Direct termination on low fibre count tight-buffered cables



LANscape Fibre Housing with Adapters, black  
Product representation - actual product may vary

## Sample Bill of Materials

Part Number	Product Description	Amount	Unit
LAN1-06E7-ADPT-B	1U LANscape fibre housing, 6 fibres, SC Duplex MM/OM3/4	2	pcs
012T8X-32188E2G	12x MM/OM3 FREEDM™ Tight Buffer Indoor/Outdoor Cable	250	m
95-050-41-X	SC MM/OM3 High-Performance UniCam Connector	24	pcs
Tool Kit recommended:			
TKT-UNICAM-PFC	High-Performance UniCam™ Tool Kit	1	pcs



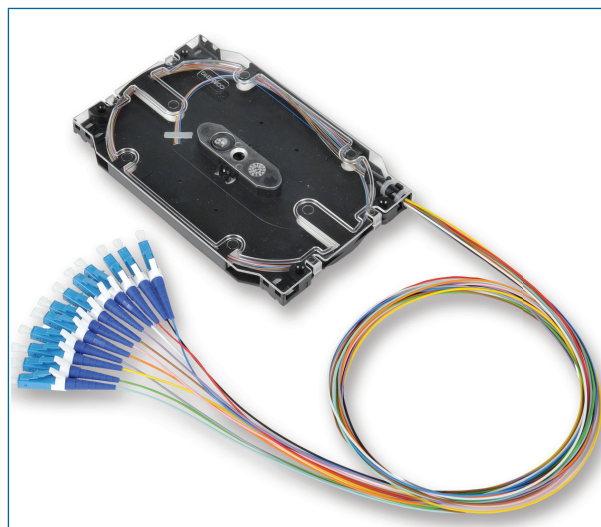
UniCam Connectors and High-Performance UniCam Tool



## Splice Packs

The universal LANscape® splice packs are suitable for LANscape Fibre Housings which provide up to 96 fibre (48 port) capacity for LC duplex and 48 fibre (24 port) capacity for SC duplex or ST® compatible connectivity. The easiest combination when fusion splicing is using a gel-free 250 µm cable, such as the FREEDM™ gel-free Indoor/Outdoor Cable.








- Splice packs are including 12 Pigtails of 900 µm TB (Easy Strip) fibres pre-stripped to 250 µm
- Fibres are Telcordia colour-coded on both 900 µm and 250 µm layers
- Pigtails are 2 m long, 0.8 m 900 µm and 1.2 m 250 µm
- Splice packs are delivered with transparent cover and both heat-shrink and crimp splice organizer
- Each splice pack holds 12 fusion splices (max. 4 splice packs per 1U LANscape Fibre Housing)



**LC SM/OS2 Universal Splice Pack**  
| SP12-02R-S8

Part Number	Description
SP12-03Q-S8	LC MM/OM4 Universal Splice Pack (heat-shrink/crimp) including 12 pigtails & cover
SP12-03Q-S8-V	LC MM/OM4 Universal Splice Pack (heat-shrink/crimp) including 12 pigtails & cover, violet boots
SP12-03T-S8	LC MM/OM3 Universal Splice Pack (heat-shrink/crimp) including 12 pigtails & cover
SP12-02R-S8	LC SM/OS2 Universal Splice Pack (heat-shrink/crimp) including 12 pigtails & cover
SP12-39Q-S8	SC MM/OM4 Universal Splice Pack (heat-shrink/crimp) including 12 pigtails & cover
SP12-39T-S8	SC MM/OM3 Universal Splice Pack (heat-shrink/crimp) including 12 pigtails & cover
SP12-58R-S8	SC SM/OS2 Universal Splice Pack (heat-shrink/crimp) including 12 pigtails & cover
SP12-50T-S8	ST MM/OM3 Universal Splice Pack (heat-shrink/crimp) including 12 pigtails & cover
SP12-61R-S8	ST SM/OS2 Universal Splice Pack (heat-shrink/crimp) including 12 pigtails & cover

## Accessories

Part Number	Product Description	Units Per Delivery	
LAN1-STRN-C-B	LANscape U-clip EDGE cradle bracket, black	1/1	
LAN1-STRN-C-G	LANscape U-clip EDGE cradle bracket, grey	1/1	
LANS-GRND-KIT	Grounding Kit for LAN housings	1/1	
LAN1-TRAY-HOLDER	LANscape metal holder for trays	1/1	
LAN1-ANGL-BKT-20-B	LANscape angled bracket for M20 PG glands, black	1/1	
LAN1-ANGL-BKT-20-G	LANscape angled bracket for M20 PG glands, grey	1/1	
LAN1-ANGL-BKT-25-B	LANscape angled bracket for M25 PG glands, black	1/1	
LAN1-ANGL-BKT-25-G	LANscape angled bracket for M25 PG glands, grey	1/1	
LAN1-STRN-T-B	LANscape strain relief bracket, T-shaped, black	1/1	



## Accessories

Part Number	Product Description	Units Per Delivery	
LAN1-STRN-T-G	LANscape strain relief bracket, T-shaped, grey	1/1	
LANS-M20	LANscape Cable glands M20 for cable diameters 6-12 mm, pack of 10	10/1	
LANS-M25	LANscape Cable glands M25 for cable diameters 9-16 mm, pack of 10	10/1	
WAXWSW-00008-C009	FutureCom™ Patch Cable Guides, 1U, black	2/1	
WAXWSW-00000-C009	FutureCom™ Patch Cable Guides, 1U, stainless steel	2/1	
LANS-PATCH-RTR-B	LANscape 19" Jumper management, 1U, black	1/1	
LANS-PATCH-RTR-G	LANscape 19" Jumper management, 1U, grey	1/1	
ADPT-KIT-12-AD	Pack of 12 LC PC DUP Adapters for LAN1	1/1	
ADPT-KIT-12-AE	Pack of 12 LC UPC DUP Adapters for LAN1	1/1	

## Accessories

Part Number	Product Description	Units Per Delivery	
ADPT-KIT-12-E7	Pack of 12 SC PC DUP Adapters for LAN1	1/1	
ADPT-KIT-12-72	Pack of 12 SC UPC DUP Adapters for LAN1	1/1	

## Cleaning Accessories

Part Number	Product Description	Units Per Delivery	
CLEANER-PORT-LC	Single-fibre Port Cleaner for LC, keyed LC, and MU connector end faces for both UPC and APC polishes	1/1	
CLEANER-PORT-2.5	Single-fibre Port Cleaner for all 2.5 mm ferruled connectors such as FC, SC and ST® compatible; effective for PC, UPC and APC polishes	1/1	



**Corning Optical Communications GmbH & Co. KG · Leipziger Strasse 121 · 10117 Berlin, GERMANY**  
**00 800 2676 4641 · FAX: +49 30 5303 2335 · [www.corning.com/opcomm/emea](http://www.corning.com/opcomm/emea)**

A complete listing of the trademarks of Corning Optical Communications is available at [www.corning.com/opcomm/emea/trademarks](http://www.corning.com/opcomm/emea/trademarks). Corning Optical Communications is ISO 9001 and ISO 14001 certified.  
 © 2018 Corning Optical Communications. All rights reserved.